

January 7 2019

Jefferson has opted to purchase and implement LanSchool instructional management software. This letter contains some information regarding LanSchool. If you have any further questions about LanSchool, or how your student's teacher is using it, please contact them directly.

What is Lanschool?

LanSchool is a teaching tool that can assist teachers to efficiently:

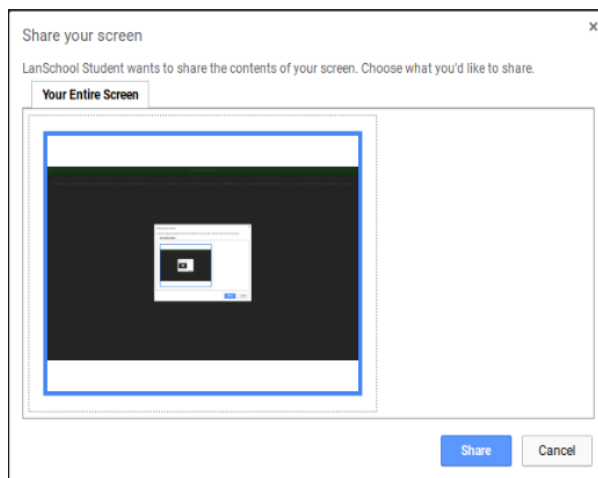
- see what their students are working on at a glance,
- display student work to the entire class,
- easily send students to a website or installed application,
- take a quick poll to check for understanding,
- send a message to the class or an individual student,
- quickly refocus individual students,
- gain the attention of the entire class

What you should know

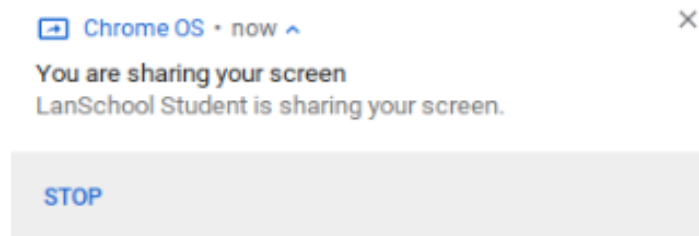
- Lanschool only works on Jeffco Public Schools networks
- Lanschool is account based, not device based
 - It is applied to students' Jeffco Google accounts (@jeffcoschools.us)
 - If a student logs into a personal Chromebook at home, LanSchool will still show up. However, because the device is not on a Jeffco network, it can't/won't be managed by school or district personnel.

What your student should to know

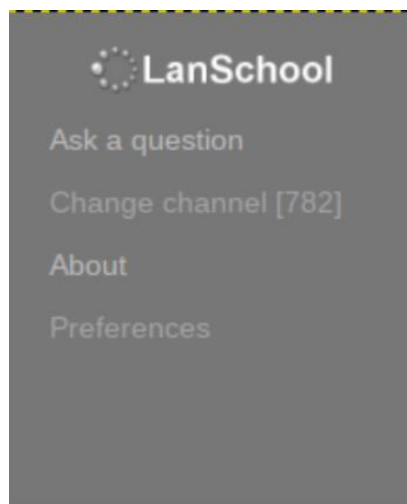
- If they are presented with a "Share your screen" popup, they must click "Share". There is no way around this. Just as a reminder, devices can only be seen or managed on Jeffco networks, and not at home.



- After clicking to allow sharing their screen, they may get a notification stating that they are sharing their screen. To clear this notification, simply click “Stop”.



- If students click the LanSchool icon, , they will see the following menu:



- The only Student Menu Options available to students are:
 - *About* - This lists the version information for LanSchool
 - *Ask a question* - This allows students to discreetly type in a question for their teacher a question while physically in class.